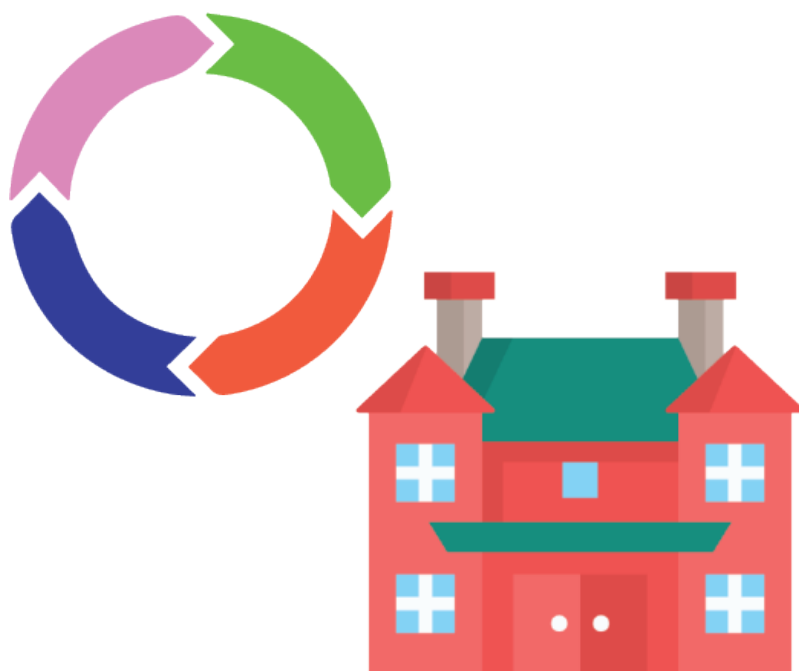




Easy Read Edition

The Cycle of Institutions





Easy Read Edition

The Cycle of Institutions

Part 1: To Start

Words to Know in Part 1



Institutions

Places where a lot of disabled people live. People living in institutions did not decide to live there. They usually can't leave when they want to.

To Start



Some people with disabilities live in **institutions**.



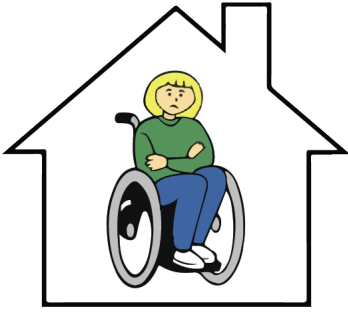
Institutions are places where a lot of disabled people live.



People living in institutions did not decide to live there.



They were usually put there by someone else.



Institutions are not run by the people living there.



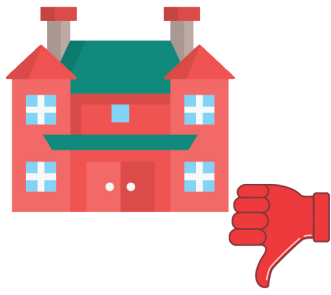
Institutions are run by the people who work there.



People living in institutions usually can't leave when they want to.



They usually can't spend their free time how they want to.



Institutions are bad places to live.



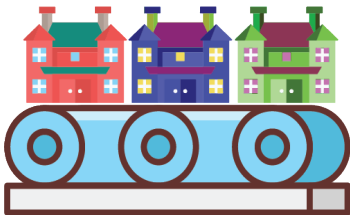
We know institutions hurt people with disabilities.



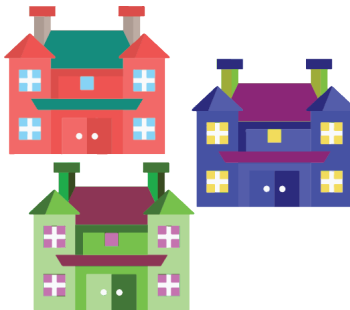
People with disabilities should get to live in the community.



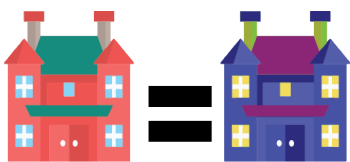
Sometimes, some institutions will close down.



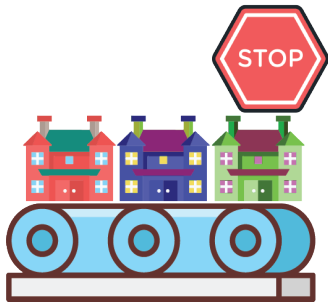
But new institutions keep getting made.



The new institutions might look different from the old ones.



But they are just like the old institutions.



We need to make sure no more new institutions get made.



We should work to close all institutions for good.



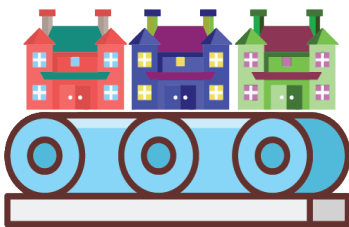
To close institutions, we need to learn why they keep opening.



This toolkit will teach you about the history of institutions.



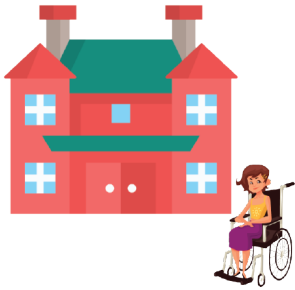
It will tell you about why some institutions got closed.



It will also tell you why new institutions still get made.



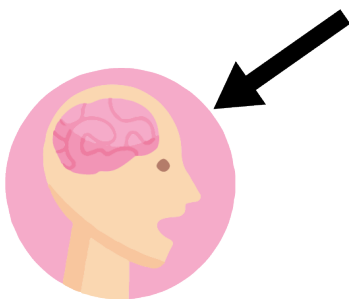
This toolkit talks about institutions just for people with intellectual disabilities.



There are other kinds of institutions, too.



But not as many people talk about people with intellectual disabilities.



We wanted to focus on people with intellectual disabilities.



We talk a lot about institutions in this toolkit.



We talk about people getting hurt in institutions.



It may hurt to read about it.



It's okay to take a break from reading if you need to.



It's okay to not read this toolkit if it will hurt you.

Support for this toolkit was provided by The Community Living Policy Center at Brandeis University. Funding for this center is provided by the National Institute on Disability, Independent Living, and Rehabilitation Research (grant number 90RTCP0004). However, the contents of this brief do not necessarily represent the policy of the federal government.