



Easy Read Edition

The Cycle of Institutions

Part 5:

The Third Cycle: Intentional
Communities

Words to Know in Part 5

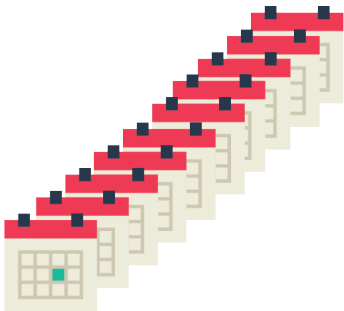


Intentional Communities

A new kind of institution. They got made to look like actual communities.

The Third Cycle: Intentional Communities

What are Intentional Communities?



In the past 10 years, a new kind of institution showed up.



The people that make them are mostly parents of disabled kids.



They saw how bad ICFs and group homes are.



They want their kids to live in a nicer place.



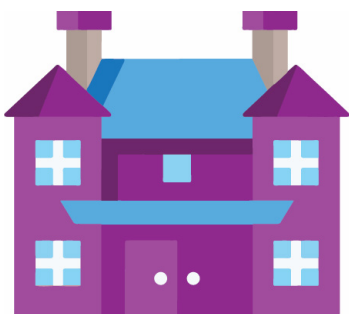
They want their kids to feel like they have a community.



But these parents still think their kids can't live in the community.



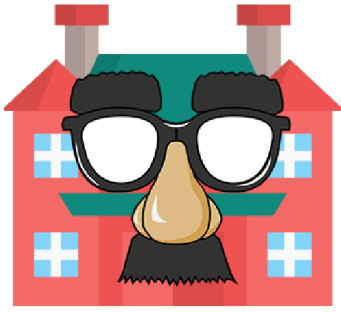
They want their kids to live somewhere just for people with disabilities.



So they built something called "intentional communities"



Intentional communities are a new kind of institution.



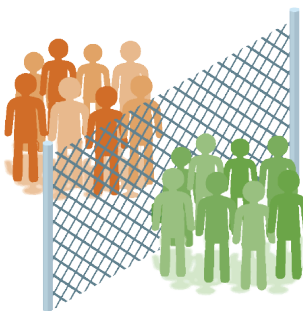
They try to hide that they are institutions.



Some of them try to look like actual communities.



Intentional communities make people with disabilities live together.



They keep us away from non-disabled people.

How do we know intentional communities are institutions?



An intentional community might make people live in a bunch of houses.



Just like group homes.



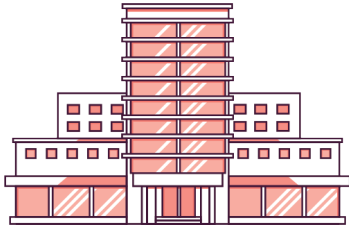
Or it could be on a farm.



Just like state schools.



Or it could be in a big building.



Just like ICFs.



Intentional communities say they will teach us things.



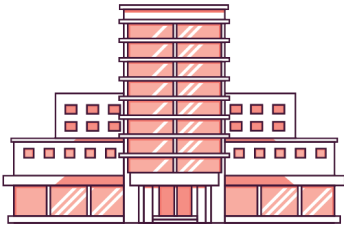
They will teach us how to work.



Just like state schools.



Or they will teach us how to get ready for the community.



Just like ICFs.



Intentional communities are very new.



So we don't know too much about them yet.



But we know that they look a lot like group homes.



They look a lot like state schools.



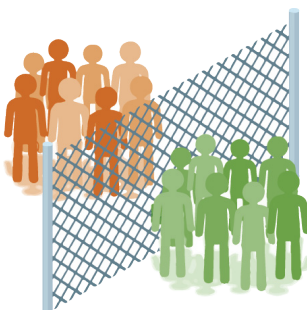
Intentional communities are not real communities.



They are institutions.



State schools, ICFs, and group homes didn't help people with disabilities.



They kept us separate from everyone else.



They thought we needed to be kept separate.



They thought that was what's best for us.



But they didn't help us. They even started hurting us.



Intentional communities will do the same thing.

Support for this toolkit was provided by The Community Living Policy Center at Brandeis University. Funding for this center is provided by the National Institute on Disability, Independent Living, and Rehabilitation Research (grant number 90RTCP0004). However, the contents of this brief do not necessarily represent the policy of the federal government.