



Easy Read Edition

“Who’s in Control?”

Control over community services for people with disabilities

Part 1: To Start

To Start



This toolkit will talk about community services for people with disabilities.



We want to know how we can tell who is in control of their services.



We want to know what questions to ask to see who is in charge.



We talked to a group of self-advocates who get community services.



We asked about how we can tell who is in control of their services.

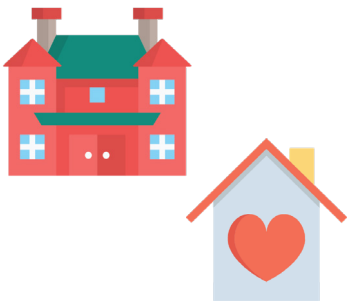


This toolkit will talk about what they came up with.

This toolkit will answer questions like:



- What are long-term services and supports?



- What are institutions? What are home and community-based services?



- What are quality measures?



- How do people come up with quality measures?



- How can we tell who is in control of their community services?



- What questions should people ask to make sure we stay in control?

The Community Living Policy Center (CLPC) is funded by the National Institute on Disability, Independent Living, and Rehabilitation Research, grant number 90TRCP0004. NIDILRR is a Center within the Administration for Community Living (ACL), U.S. Department of Health and Human Services (HHS). This resource's contents reflect the views of the authors and not the National Institute on Disability, Independent Living, and Rehabilitation Research
