



Easy Read Edition

“Who’s in Control?”

Control over community services for people with disabilities

Part 6: What did ASAN do to try and come up with quality measures?

Words to Know in Part 6



Focus group

When people meet to talk about something

What did ASAN do to try and come up with quality measures?



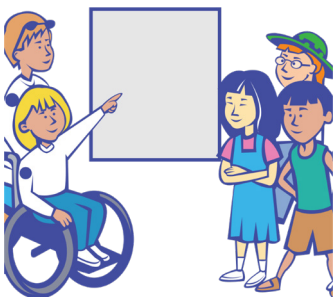
ASAN wants everyone to be able to get good services.



We want to make sure people with disabilities are in control of our services.



We want people with disabilities to help make quality measures.



Nothing about us, without us!



So ASAN had a focus group with people with disabilities.



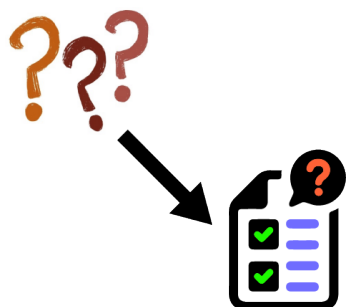
A **focus group** is when people meet to talk about something.



We talked about how to tell who is in control of their community services.



We came up with a list of questions to tell who is in control.



We can use this list to help make quality measures.



We can work with people who study community services.



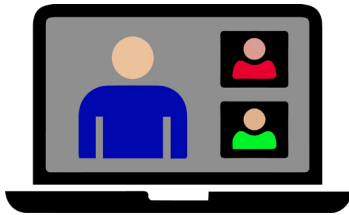
We can also work with CMS.



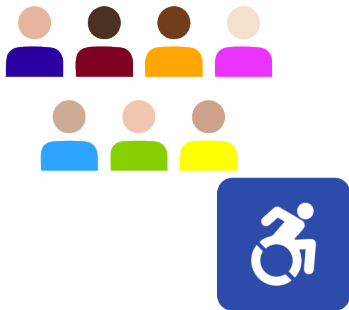
We can all work together to make better quality measures.



ASAN held the focus group over the internet.



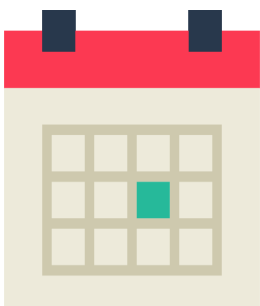
We used a video chat program called Zoom.



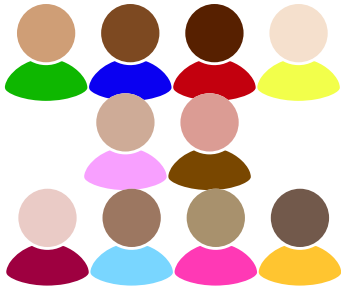
7 people with disabilities took part in the focus group.



The focus group had 5 meetings. They each took 2 hours.



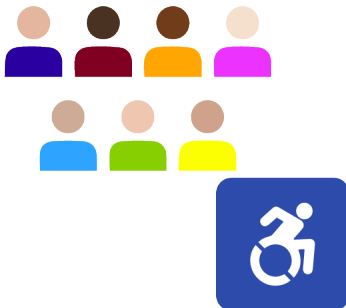
The meetings were in March and April of 2021.



ASAN wanted all different kinds of people in the focus group.



We wanted to hear the experiences of people who got different kinds of services.



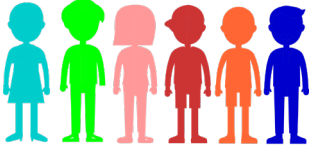
7 people with disabilities took part in the focus group.



They all get community services.



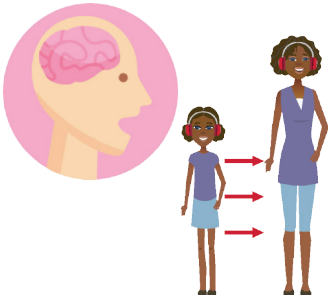
But they need different kinds of help to live in the community.



They are also different from each other in other ways.



They are different races.



They have different kinds of intellectual and developmental disabilities.



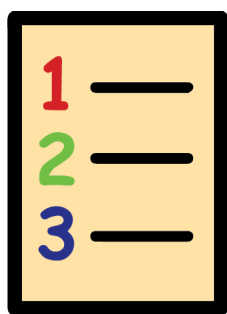
We started the focus group by explaining what quality measures are.



We asked people to think about their community services.



People had a lot of different things to say about being in control!



We split up the ideas everyone had into themes.

The Community Living Policy Center (CLPC) is funded by the National Institute on Disability, Independent Living, and Rehabilitation Research, grant number 90TRCP0004. NIDILRR is a Center within the Administration for Community Living (ACL), U.S. Department of Health and Human Services (HHS). This resource's contents reflect the views of the authors and not the National Institute on Disability, Independent Living, and Rehabilitation Research
